

"We can handle..."

AMSteel
Port & Steel Operations



AMSTEEL OPERATION REPORT

MV OLYMPIC PIONEER Operational Report



M/V OLYMPIC PIONEER discharged successfully

- **Vessel Name** : MV. OLYMPIC PIONEER
- **Cargo** : Steel Billet
- **Quantity** : 53,442 Ton
- **Operation Start** : 1515 08th of April 2018
- **Operation Finish** : 1720 15th of April 2018
- **Vessel Berthing** : 1145 08th of April 2018
- **Vessel Sailing** : 2100 15th of April 2018
- **Equipment Used** : 2 LHM 550 Mobile Harbor Cranes
- **Idle Duration** : Non-stop Working
- **Hours Operated** : 170 Hours
- **Actual Performance** : 314 Ton Per Hour / 7,544 Ton Per Day
- **Crane Productivity** : % 99

AMSTEEL handled very successfully

MV OLYMPIC PIONEER Operational Report

Vessel Berthing

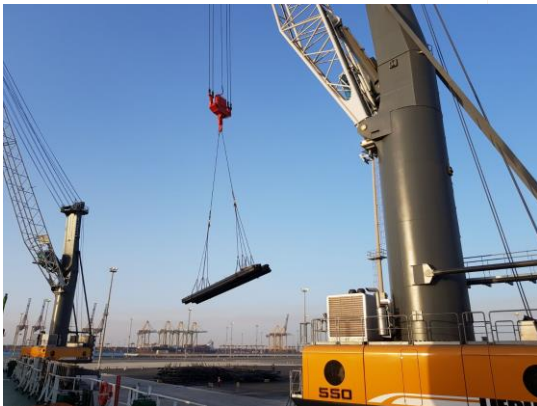
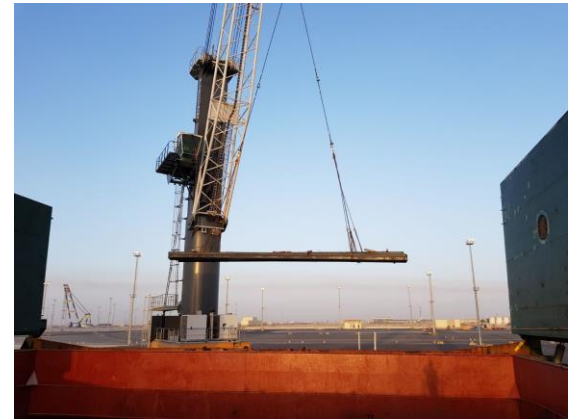
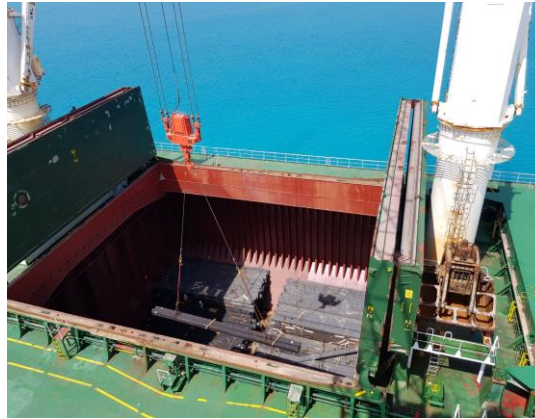


AMSTEEL handled very successfully

MV OLYMPIC PIONEER Operational Report



Import Operation

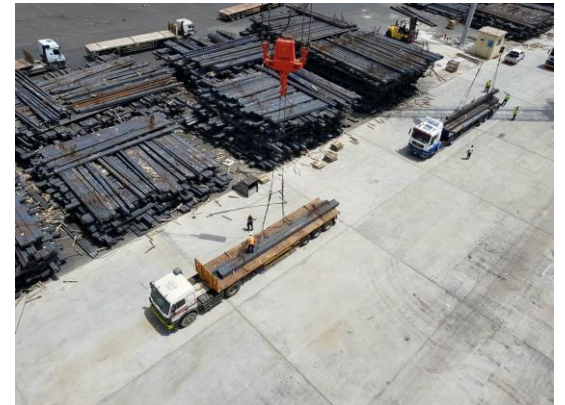
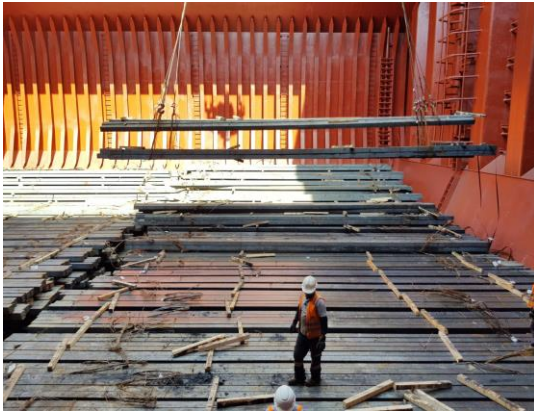


AMSTEEL handled very successfully

MV OLYMPIC PIONEER Operational Report



Import Operation

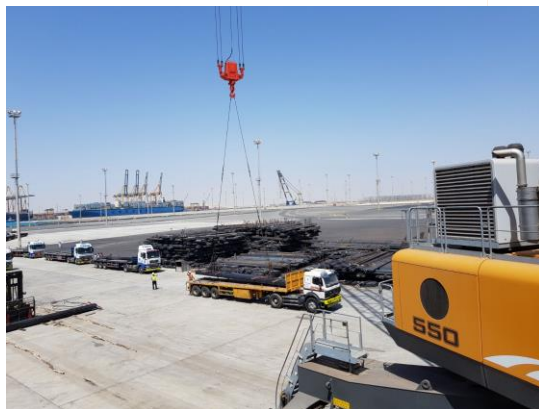
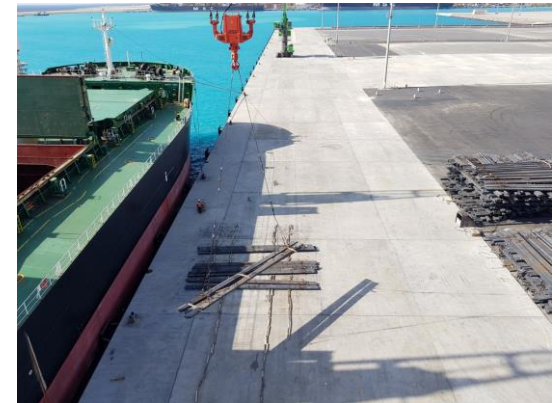


AMSTEEL handled very successfully

MV OLYMPIC PIONEER Operational Report



Import Operation



AMSTEEL handled very successfully

MV OLYMPIC PIONEER Operational Report

Operation Completed



MV OLYPIC PIONEER discharged very successfully



Thank You

Info@amsteel.com

Sales@amsteel.com